

Seminole Elementary

Wednesday, September 1, 2021



Title I Annual Parent Meeting

Title I Annual Meeting Agenda

About Title I

- What is Title I?
- Title I Supplemental Support
- Title I Funding
- Title I Schoolwide Planning
- Title I Schoolwide & Parent and Family Engagement Budgets

Parents' Right to Know Insert Name of Presenter

Working Together for Student Success Insert Name of Presenter

- Review Title I Parent-School-Student Compact
- Parent and Family Engagement (PFEP)
- Pinellas County Schools Parent and Family Engagement Plan (LEA PFEP)
- Parent Advisory Council (PAC) Rep Needed

Accountability

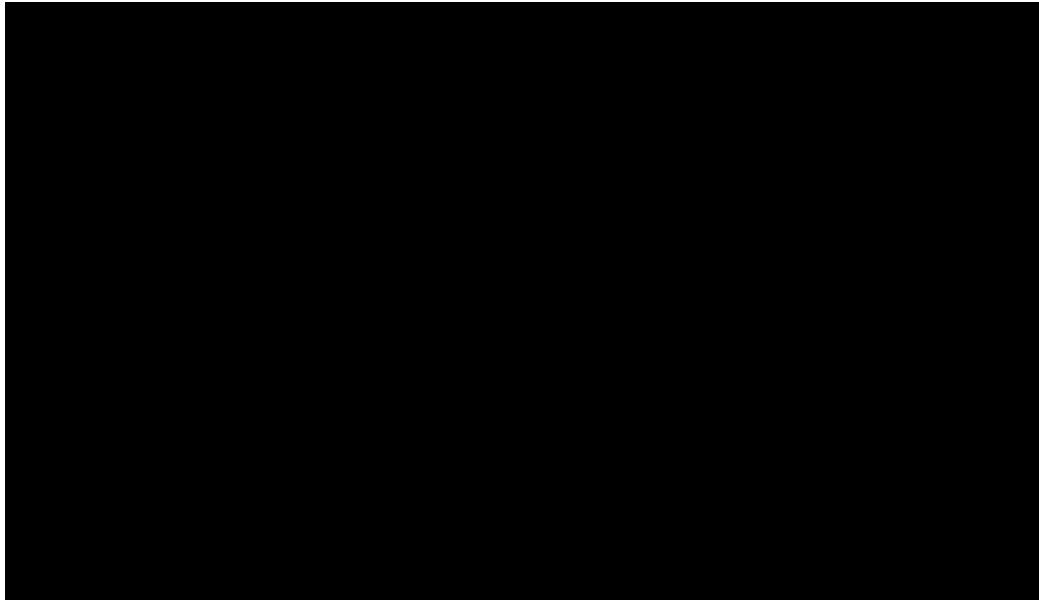
- Standards
- Curriculum
- Assessments

Questions?

Don't forget to take our survey!

Together, will accomplish great things!

Celebrate with Title I

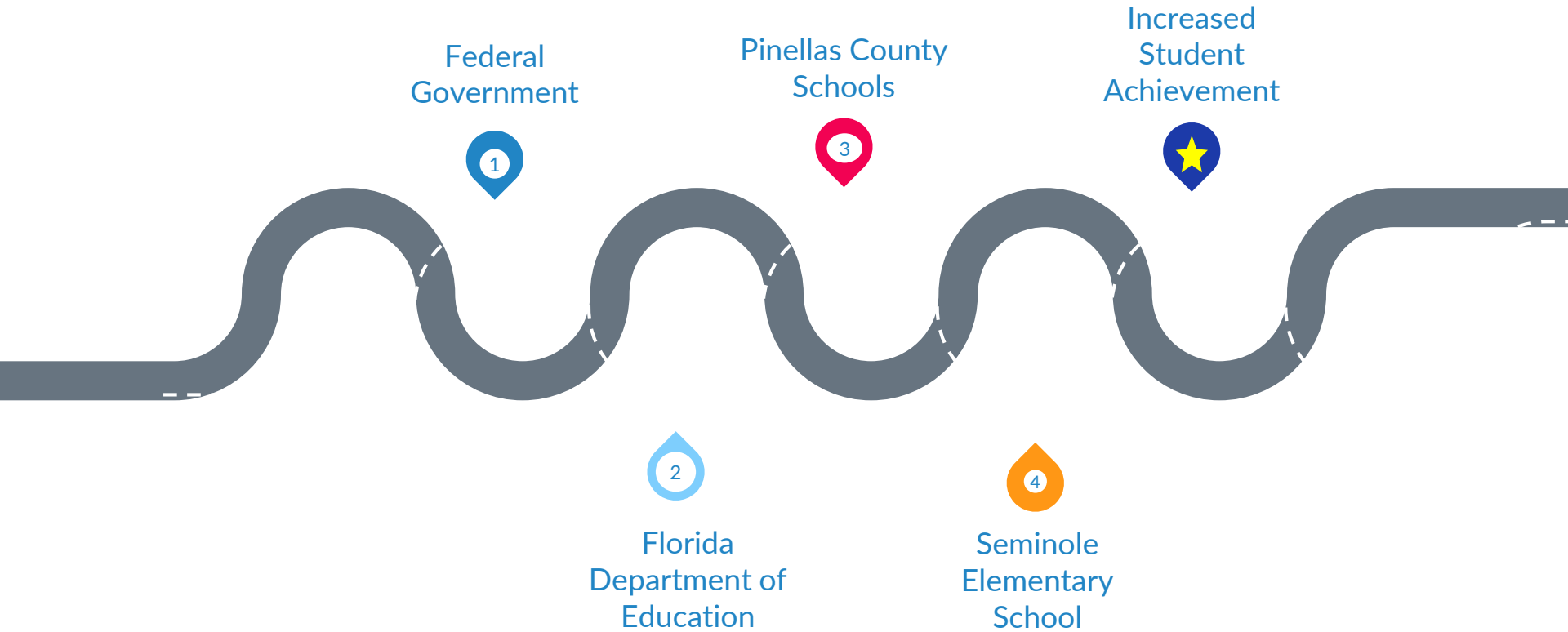


About Title I

- ▷ Title I is the largest federal assistance program for our nation's schools.
- ▷ The goal of Title I is to address the **academic needs** of students and to assist them in meeting their state's academic standards.
- ▷ The program serves **75** schools in Pinellas County including eligible students in **34** non-public schools.



Title I Funding





Supplemental

Definition: provided in addition to what is already present or available to complete or enhance it.

Title 1 provides extra academic support and learning opportunities.



Title I Programs Provide Supplemental Support

At Seminole Elementary:

- ❑ Reading Coach to provide coaching for teachers
- ❑ Part-time hourly teachers to work directly with students
- ❑ ELP – Tutoring before and after school
- ❑ Instructional materials for classrooms



Title I Schoolwide Planning

First

Input from school, family, and community members determine how Title I funds are used based on a needs assessment.

Second

Please attend online or in-person meetings/trainings and complete surveys to provide input on Title I funding.

Last

All Title I schools must document that parents are involved in the schoolwide planning process.

Seminole Elementary's Title I Parent & Family Engagement 20-21 Budget

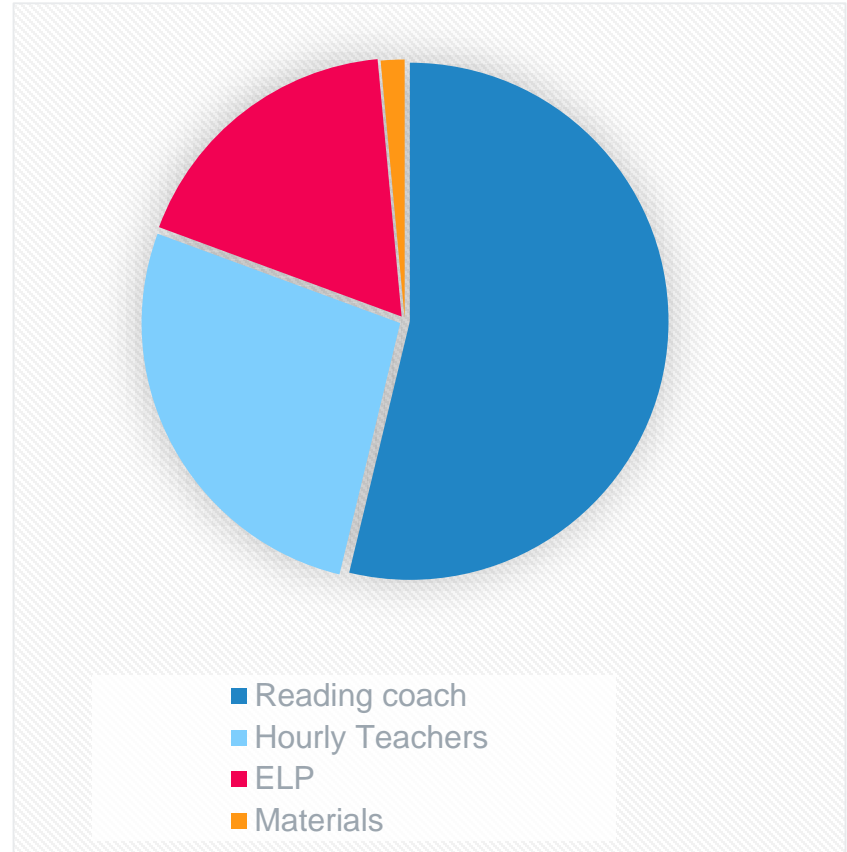
Total Allocation - \$87,402

Reading Coach - \$47,000 (54%)

Part-Time hourly teachers - \$23,463 (27%)

ELP - \$15,642 (18%)

Instructional materials - \$1,297 (1%)



Parent's Right to Know

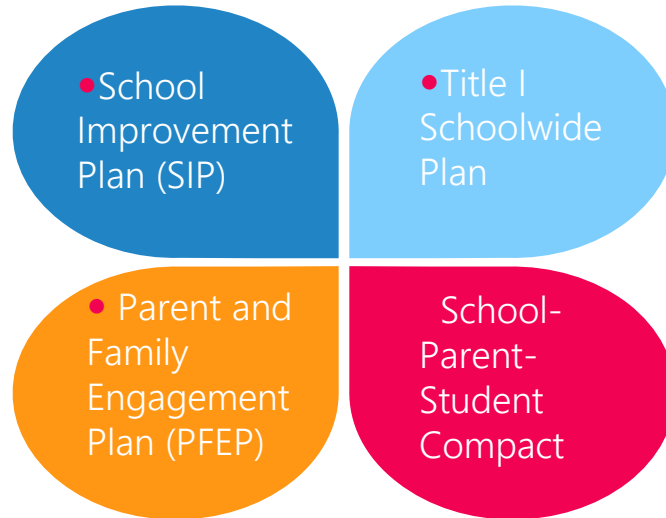
As a parent of a student attending a Pinellas County School Public School, you have the right to...

- ▷ Be provided information on your child's level of achievement on assessments in Reading/Language Arts, Writing, Mathematics, and Science.
- ▷ Request and receive information on the qualifications of your child's teacher and supplemental personnel working with your child.
- ▷ Be notified of non-highly qualified or out-of-field teachers at the school.
- ▷ Be informed if your child is taught by a non-highly qualified teacher for four or more consecutive weeks.



Working Together for Student Success

As a Title I parent you have the right to be involved in the development of the following plans and documents for our school which can be found on our website (insert website) to view as well as in the Parent Station located in the front office.



Parent-School-Student Compact

▷ The **purpose** of the compact is to foster student achievement. By signing the Parent-School-Student Compact, (Insert name of school here), teachers, staff, parents and students agree to work together to share the responsibility of helping students meet or exceed state, district and school academic goals.

▷ The Parent-School-Student Compact is updated every year to include parent, student, teacher, and staff input. Parent, student, teacher and staff comments are welcome at any time during the year.



Please review and sign your child's Compact.

Our goal is to receive 100% participation!



2021-2022

Seminole Elementary Partnership Compact

Successful schools are the results of families and educators working together

Be Respectful

Be Responsible

Be Honest

Be Safe

Be Self Motivated

As a Parent/Guardian, I pledge to:

Make sure my child arrives at school between 8:10 and 8:35 every day and assure regular attendance each day.

Communicate regularly with our child's teacher and attend conferences as requested and school events when possible.

Ensure that my child completes all class and homework assignments.

Support the school's efforts in promoting positive behavior.

Reinforce the school wide expectations for success.

Encourage my child to read at home and talk about their school experiences daily.

Look at my child's agenda to review schoolwork, sign the agenda daily and have an open line of communication with the teacher.

Give praise to and encouragement to my child when reviewing mid-grade reports and homework.

Access FOCUS to monitor student progress.

Parent Signature: _____

Date _____

As a Student, I pledge to:

Come to school on time and prepared with all my materials and completed homework.

Show respect for peers, adults, school property and myself.

Take responsibility for my actions and my learning.

Follow the school wide expectations for success.

Share my school learning and experience with my family.

Give my parents the agenda, mid-grade reports or other papers and work from school to review.

Student Signature: (First & Last Name)

Print Student Name: _____

Mission Statement

The faculty and staff of Seminole Elementary unite with parents and community to insure 100% success by providing a safe and risk-free environment, supporting diverse needs, and making instruction challenging and meaningful for our students while nurturing a passion for lifelong learning.

As a Teacher, I pledge to:

Provide a safe and positive school environment conducive to learning.

Help each student achieve his/her fullest potential.

Provide high-quality curriculum instruction and assignments.

Monitor and communicate student's progress with student and family. This includes sending home mid-grade report for review.

Model what the Guidelines for Success look like in action, while teaching students self-discipline and responsibility.

Enforce school and classroom rules fairly and consistently.

Maintain open lines of communication with each student and their family.

Teacher Signature: _____

Date _____

White Copy – Parents

Yellow Copy – Title I

Pink Copy – Teacher

Updated – 5/1/2021

Parent and Family Engagement Plan (PFEP)

The PFEP Sections include information about the following:

- Parent trainings to increase student achievement
- Staff trainings for engaging parents
- Communication methods between home and school
- Flexible meeting times
- Accessibility for parents
- Coordinating with other Federal Programs

Parent Support Card

- ▷ Will be used to celebrate parent involvement through the use of the Support Card
- ▷ Every time you come to a school event, parent-teacher meetings, or activities you can earn points
- ▷ Points can earn you a certificate, T-shirt or entered into a drawing for a \$100 gift card.
- ▷ A sample of the card is found on the following slides.

Seminole Elementary Parent Support Card

Students get report cards! Schools get report cards! Even teachers get report cards! We want to celebrate the involvement of our parents through the use of our **Parent Support Card!** You are invited to bring this card to all school events, parent-teacher meetings, and other involvement activities to receive points towards earning your Power Parent Certificate and T-shirt. Please feel free to contact your child's teacher or our school counselor for tips on how to be more involved in your child's education.

Point Opportunities	Signature Verification	Points
Attend Open House		10
Attend Title 1 Meeting		5
Attend Meet the Teacher		5
Introduce myself to the Principal, Mr. Cerreta		2
Introduce myself to the Assistant Principal, Ms. Pembroke		2
Introduce myself to a member of the Student Services Team Social Worker – Ms. Whitely Counselor – Ms. Schultz School Psychologist – Ms. Messner		2
Attend a PTA Meeting		5
Attend a SAC Meeting		5
Attend a conference with my child's teacher to discuss his/her academic progress; review and sign my child's PMP		5
Meet with a staff member to learn how to sign in and use my child's CLEVER account and grades in Parent Portal Call the school @ 727-547-7668 to schedule an appointment		5
Chaperone a Fieldtrip		3
Volunteer for 1 hour		2
Volunteer at a Monthly <u>Incentive</u> (Email to plankeyh@pcsb.org sign up)		5
Attend Math Family Night		10

Eat breakfast/lunch with my child		3
Support my child's participation in extra-curricular activities at Seminole <u>Elementary</u> (STEM, Promise Time, Scouts, Chorus, Art Club, All Pro Dad, imom.) Activity: _____		3
Make sure my child is on time for school every day. (No more than 1 tardy per month)	August _____ September _____ October _____ November _____ December _____	3 per month
Make sure my child is present for school. (No more than 1 absence per month)	August _____ September _____ October _____ November _____ December _____	5 per month
Attend Parent Literacy Night	First 9 Weeks _____ Second 9 Weeks _____	15 Each
My child did not receive any referrals or <u>LO's</u>	August _____ September _____ October _____ November _____ December _____	5 per month

Use the Point System Below to Track your Progress!

***110 or more points - Congratulations!** You are a Power Parent and will be entered into \$100 gift card drawing at the Power Parent Breakfast

85 or more points - Way to go, you are officially a Seminole Hawk Power Parent! This earns you a Power Parent Shirt, a certificate presented at the Power Parent Breakfast.

65-84 points - You're on your way! This earns you a certificate presented at the Power Parent Breakfast

Parent Name _____

Student(s) Name(s) _____



We want YOU!

Parent Advisory Council (PAC)

Parent Advisory Council (PAC)

- The District has a Parent and Family Engagement Plan. The summary of the this plan is in the Title I School & Family Partnership Overview.
- You may access the full plan at www.pcsb.org/titleone
- The Parent Advisory Council (PAC) is responsible for reviewing and revising the District PFEP.
- PAC will meet virtually or in-person with the district's Title I Family Education Coordinator.
- PAC meets twice a year, if you are interested in representing our school please notify, Lou Cerreta.

Accountability

School Report Cards

- School Grade and Overview
- Population and Enrollment
- Assessments – Academic Achievement, Growth, and Population
- Assessments – English Language Learners
- Graduation and Beyond
- Educator Qualifications and Equity
- Long-Term Goals and Interim Progress
- Accelerated Course Enrollment
- Per-Pupil Expenditures
- National Data

Available online at <https://edudata.fldoe.org/> or Front Office

Visit to find district and school grades, EduData Portal

The screenshot shows the Florida Department of Education's EduData Portal. At the top left is the logo for the Florida Department of Education (fldoe.org). The navigation bar includes links for EDUDATA PORTAL, REPORT CARDS, STRATEGIC PLAN, CLOSING THE GAP, ADVANCED REPORTS, and RESOURCES. A search bar is present with the text "Search by Zip Code, School, or City". A modal window titled "School Report Card Selector" is open in the center. It contains an instruction box: "Instructions: Use the school and district selection boxes below to navigate to a school's report card. Suggested options will appear as you type in each box." Below the instructions are two search sections: "Search by District:" with a dropdown menu showing "PINELLAS" and a small "x" icon; and "Search by School:" with a dropdown menu showing "Select a School". A blue button labeled "View School Report Card" is positioned at the bottom of the modal. The background of the portal is dimmed, showing a map of Florida and a "School Report Cards" section with a schoolhouse icon.

Florida Standards

Florida's academic content standards establish high expectations for all students.

Florida Standards identify what your child needs to know and be able to do in all content areas. You may read more information by visiting fldoe.org/academic/standards/.

Also, your child's teacher will be able to explain the standards for your child's grade level.



Florida Standards Assessment (FSA)

- ▶ Fall Assessment-
FLKRS (Florida Kindergarten Readiness Assessment)

- ▶ Spring Assessments-
ELA Gr 3-10
Math Gr 3-8
Science Grs 5 and 8

To learn more about state assessments visit the Florida Department of Education's website, fldoe.org/accountability/assessments.



FLORIDA'S
B.E.S.T.
BENCHMARKS FOR EXCELLENT STUDENT THINKING
STANDARDS



- ▶ Florida Benchmark For Excellent Student Thinking Standards (B.E.S.T). You may read more information by visiting, <http://www.fldoe.org/standardsreview/>

**COMING
SOON!**

**FLORIDA'S
B.E.S.T.
STANDARDS**

BENCHMARKS FOR EXCELLENT STUDENT THINKING



*Most Aggressive
Transition Timeline in
Florida's History*

	<i>2020-2021</i>	<i>2021-2022</i>	<i>2022-2023</i>
PROFESSIONAL DEVELOPMENT	<i>Begins for ELA and Math</i>	Continues for ELA and Math	Continues for ELA and Math
STANDARDS	Current ELA and Math	<i>New K-2 ELA</i> Current 3-12 ELA Current K-12 Math	<i>New ELA and Math</i>
INSTRUCTIONAL MATERIALS	Current ELA and Math	<i>New K-2 ELA</i> Current 3-12 ELA Current K-12 Math	<i>New ELA and Math</i>
STATEWIDE ASSESSMENTS	Current ELA and Math	Current ELA and Math	<i>New ELA and Math</i>

Next Steps



Additional Resources

Title I Parent & Family Coordinator – Amy Brown

brownamyl@pcsb.org

Learning at Home Family Resources -

<https://www.pcsb.org/Page/32836>

Volunteer in a Pinellas County School -

<https://www.pcsb.org/Page/459>

Parent Advocacy – Keosha Simmons

simmonskeo@pcsb.org

Parent Academy POWER HOURS Webinars -

<https://www.pcsb.org/Page/26534>

Partnerships - <https://www.pcsb.org/Page/418>



We appreciate your time!

Please feel free to ask any questions and provide feedback on our Title I Program.



Contact Us

10950 74th Ave. N.

Seminole, Fl. 33773

Phone: 727-547-7668

Website:

<https://www.pcsb.org/Page/129>





Education is for improving the lives of others and for leaving your community and world better than you found it.

Marian Wright Edelman

Please take the time to participate
in our survey.

<https://forms.office.com/r/9qUnJwSGbb>

Scan the QR Code below



Your feedback is greatly appreciated!